

## Important notice on lithium ion battery

- 1) Charge the battery only with original Unitech power adaptor supplied in the box
- 2) Do not store the device with battery installed for long period of time
- 3) If long period storage is required, remove battery from device.
- 4) During long storage period, maintenance work is required at every 3 months period. During maintenance, discharge the battery completely, and then charge to 60% - 70% (or 3.8V - 3.9V).
- 5) Store battery in dry, cool environment. Temperature should be -20 to 40 degree Celsius and relative humidity should be 45% to 85%
- 6) Charge battery at 5 to 45 degree Celsius
- 7) Do not operate the device outside the recommended temperature, which is from -20 to 60.
- 8) Do not install a third party battery into Urovo device

## Safety precaution

- 1) Do not transport the battery at temperature higher than 65 degree Celsius
- 2) Do not expose battery to fire or heat source
- 3) Do not forcefully install the battery in opposite direction into the device
- 4) Avoid impact and high vibration force on the battery
- 5) Keep battery dry at all time
- 6) Do not use battery that is damaged or appear to have been modified
- 7) Do not use unauthorized power adaptor to charge the battery
- 8) Do not discharge the battery beyond the specification of the battery
- 9) Do not place battery into microwave oven or pressured container
- 10) Do not damage battery with sharp objects
- 11) Do not operate in environment with extreme electrostatic fields or magnetic fields.
- 12) If leakage found in battery, avoid contact with body parts. Should leakage be in contact with body parts, flush with water and immediately seek medical attention
- 13) If battery exhibits unusual behavior like color change, temperature became hot, shape is swollen, remove battery from device and stop using that battery
- 14) If the contact point on the battery is dirty, clean with a dry cloth
- 15) Dispose the battery according local regulation. Recycle if possible.
- 16) Improper usage or storage may cause battery performance to drop, leak, damage, or even escalate to personal safety issue.

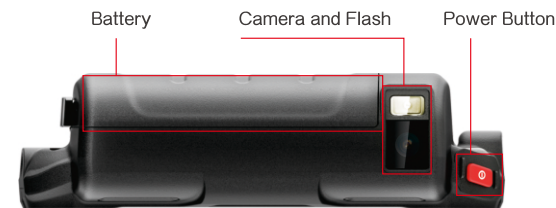
## Appearance and Buttons

### Front view



To turn on device: Hold power button until the device switches on.  
 To turn off device: Hold power button during operation until the device shows a menu, then select "Power off"  
 To turn off display: Press the power button shortly. The device will also turn off the display automatically when it is left idle for a while. That time of auto-sleep can be configured at "Setting→Display→Sleep"  
 To turn on the display: Press the power button shortly.

### Side view



### Rear view



## U2 Rugged Wearable User Guide

### Battery Installation

Charging by Direct-Charge



Power adapt



USB-Pogo Pin Data Communication Cable

Power adapt

When device is charged using DCpower adapter,the power indication LED is red,when fully charged,the LED will turn green

USB-Pogo Pin Data Communication Cable

Connect the device and computer by USB-Pogo Pin data communication cable.



Buckle

### Battery Installation



Insert battery in the direction as shown in the picture on the right.Place the battery tightly in the corresponding position.

When disassembling, first press the button to the unlocked "🔒" icon position, and then pull out the battery.

### Battery instructions

The device battery for the Li-ion battery, can only be charged by use of the original charger from the manufacturer, do not use unknown charger to charge the battery in the device.

Do not use metal contact or artificial short-circuit electrode, can not be placed in the overheating, tide or corrosion of the environment, not squeeze or collision.

The battery in the absence of electricity after the timely charge, not in the empty or full capacity of the case of long-term storage, preferably about 50% of the electricity storage; if long-term use of equipment, please remove the battery from the device to save.



Note: If the battery appears to pop up or leak, please replace the battery.

Note: When you first get the battery, the battery remaining capacity may be only about 50%, you can use the included power adapter or cradle (need to buy separately) to charge, the first charge recommended in 8 hours or more.

### SIM card / SD card Installation Instructions

The back cover of the buckle to the unlock "🔒" icon position to open the back cover, the SIM card in the right direction to the SIM card into the corresponding card slot (as shown), SD card installed and SIM card similar The The card is fitted with a rear cover and then the button is set to the "🔒" position.



Note:

- 1, SIM card for the standard SIM card.
- 2, SIM card slot and SD card can be inserted into the position, not brute force to push.
- 3, SD card inserted card slot, remove the hand inward click on the SD card exposed in the card slot outside the part, hear a slight noise, SD card can pop up, do not pull out the SD card with brute force.

### Wrist strap Installation Instructions



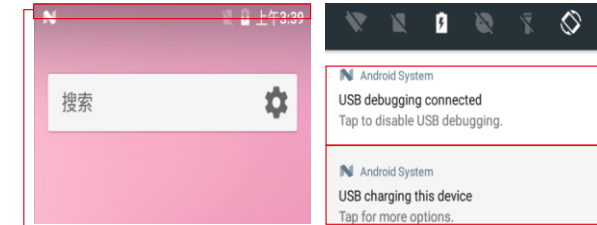
Guide direction

Wrist strap installation: as shown in the direction of the wrist strap guide rail into the rear cover of the guide rail groove, and then forced the wristband along the direction of the guide to the bottom.

Wrist strap disassembly: forced in accordance with the "PUSH" direction down, and then the wristband along the direction of the guide pulled out.

### Connecting to PC

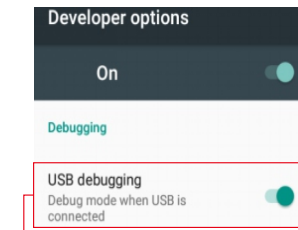
After you install the Android driver or an Android smart phone assistant, you can connect the devices to your PC with USB cable provided. (You can download the software mentioned above from <http://eu.ute.com>. After device connected to your PC, the screen would display like this:



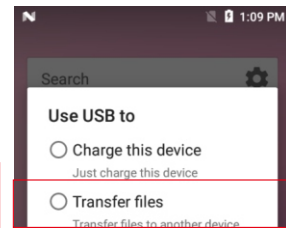
Tap the top of the screen, drag downwards and the USB setting interface will appear.

Click on this to go the next left interface

Click on this to go the next left interface



Check the USB debug if you intend to develop software and step through your code with the device.



Check the SD Card option if you intend to transfer files between your PC and the device.

Note: When you enable device as USB Storage to PC, the flash memory of the device are map as a PC drive. At this point of time, you cannot install APK to the device.

To install APK to the device, it should not be in USB Storage mode.